

LED Lighting Systems In Sustainable Building Design



CONTENTS

| | |
|--------------------------------|--------|
| LED Technology Growth | Page 4 |
| LED Advantages | |
| High Source Efficacy | 6 |
| Optical Control | 7 |
| Long Operating Life | 8 |
| Delivered Lumens | 10 |
| Other LED Advantages | 11 |
| Impact on LEED Scoring | 12 |
| Questions to Ask | 13 |
| LEDs For General Lighting..... | 14 |
| Future of LED Lighting..... | 15 |

“Building Green” – A Worldwide Movement

INTRODUCTION

Today, around the world, there is an unprecedented level of interest and effort focused on implementing “green” designs for sustainable buildings. This extraordinary movement is in reaction to several important facts regarding the impact of buildings on the world’s environment. Experts estimate that by themselves, buildings consume:

- +40% of the world’s energy

- +40% of the world’s virgin materials

At the same time, it is estimated that buildings produce:

- +40% of all global waste

- +40% of all greenhouse gases

By improving how we design and construct new buildings and how we remodel existing buildings, we can greatly reduce their environmental impact.

The desire to build more sustainable buildings is a worldwide phenomenon. In 1995, the European Commission launched the Green Building Program (GBP), a voluntary effort aimed at improving the energy efficiency of non-residential buildings throughout Europe. In November, 1999 the founding meeting of the World Green Building Council was held in San Francisco. This first meeting was attended by representatives of green building councils from Australia, Japan, Russia, Spain, United Arab Emirates, the United Kingdom and the United States.

In the United States, the movement is being driven by the U. S. Green Building Council (USGBC), which has developed a national standard for sustainable building design, known as LEED (Leadership in Energy and Environmental Design). Through LEED, the USGBC offers a set of well-documented, scientifically proven performance criteria and a point system for attainment of LEED certification.

It is important to recognize that LEED certification requires the building designer to incorporate “green technology” in many areas of the structure and that certification cannot be attained through the use of any single technology or product. Rather, a holistic approach to the building’s overall design is required.

Lighting considerations are an important part of designing an environmentally sound structure. The use of Light Emitting Diode (LED) luminaires can provide certification points in a number of key areas within the point structure methodology of the LEED certification process, but cannot by itself guarantee LEED certification.



U.S. GREEN BUILDING COUNCIL

The U.S. Green Building Council (USGBC) is a non-profit organization committed to expanding sustainable building practices. USGBC is comprised of more than 12,000 organizations throughout the U.S. building industry, working to advance structures that are environmentally responsible, profitable, and healthy places to live and work. Members include building owners and end-users, real estate developers, facility managers, architects, designers, engineers, general contractors, subcontractors, product and building system manufacturers, government agencies, and non-profits.

USGBC MISSION

To transform the way buildings and communities are designed, built and operated, enabling an environmentally and socially responsible, healthy, and prosperous environment that improves the quality of life.



LED: The next generation of lighting technology

LEDS – A LITTLE HISTORY

Light Emitting Diodes (LEDs) have been around since the 1960s. For the first few decades, the relatively low light output of LEDs and narrow range of colors limited their role to specialized applications such as indicator lamps. As LED output improved, the devices found their way into signage of all types (think LED exit signs and traffic signals) and into smaller, more decorative luminaires. LED light output levels gradually increased over time. The past few years have seen white LEDs more than triple their light output. These improvements have set the stage for LEDs to become the light source for the next generation of general lighting products.

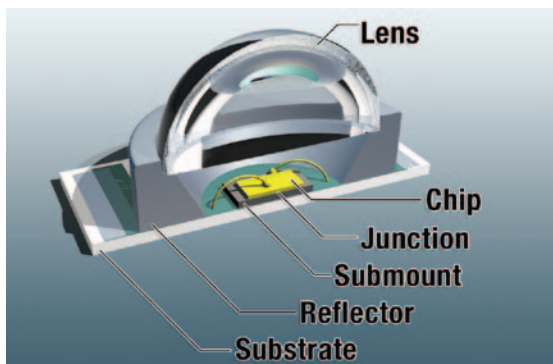
THE STATE OF LED TECHNOLOGY TODAY

LEDs are solid-state semi-conductor devices that produce light. Because of the way they are constructed, the light they produce is highly directional. As with any light source, LEDs have certain characteristics and limitations which need to be understood before the technology can be utilized to its maximum potential.

LEDs that are designated for general lighting use are expected to produce a suitable level of light output to allow for the replacement of the existing lighting technologies in use today; incandescent, fluorescent, mercury, metal halide and high pressure sodium. For most general lighting applications, white light is preferred. An LED can produce white light in one of two ways:

- ← *Phosphor conversion in which the LED chip emits blue or near ultraviolet light. The LED chip is coated with phosphor, which interacts with the emitted light to produce white light. This is similar to the way in which light is generated by a fluorescent lamp. Most of the discussions in this brochure pertain to high brightness or power LEDs using blue light conversion.*
- ← *RGB (Red, Green, Blue) systems mix the light output from three or four monochromatic LEDs (amber can also be used to increase the color palette) producing white light that is “tunable” to many different colors of light, including white light of various color temperatures.*

LEDs have some significant characteristics making them excellent general lighting sources: high source efficacy, optical control, extremely long operating lives and exceptional delivered lumens when used in a properly designed lighting system. In addition, LEDs also have a number of other favorable attributes. However, there are important technical limitations that must be understood in order to properly utilize these marvelous light sources in luminaires.



A TYPICAL HIGH BRIGHTNESS LED IN ITS PACKAGE

The most important measurement for any LED system is the temperature at the point within the LED package labeled as the junction. The junction temperature is the primary determinant of the potential operating life and performance for an LED. The LED manufacturer designs the LED package for optimal heat removal from the junction. Once the luminaire manufacturer has the packaged LED, the junction temperature is controlled by the design of the luminaire and the ambient temperature environment in which it operates.

LED ADVANTAGE #1

High Source Efficacy

WHAT IS THE EFFICACY OF AN LED?

When an LED manufacturer produces an LED chip, the light output is measured by applying a suitable current for 25 milliseconds. This measurement is the standard reference point for all modern LEDs. The steady state lumens produced by the LED will typically be less due to the increased junction temperature at steady state operation. The junction temperature is the temperature in the LED at the point where light is generated.

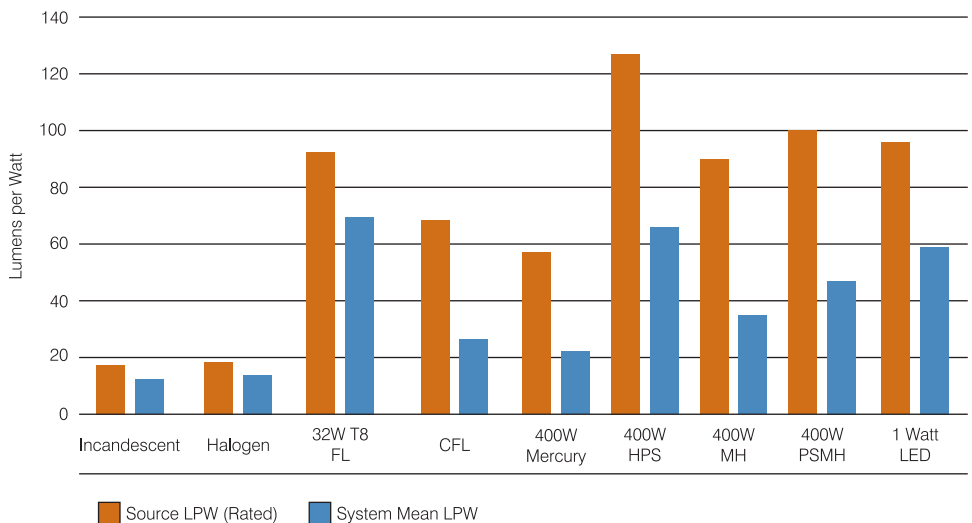
Also, this initial efficacy number does not include efficiency losses from the driver or optics. When evaluating mean system efficacy, the lumen depreciation of the LED over life must also be taken into account. The graph compares the initial light source efficiencies for many of the common lighting technologies in use today. Also shown is the mean delivered lumens per watt (LPW) for the system, taking into account all typical losses.

Over the past few years, LEDs have become more efficacious. Recently, blue-white phosphor conversion LEDs have approached the 100 lumens per watt level (see graph below). The US Department of Energy estimates that by 2010, white LEDs utilizing phosphor conversion will rival the efficacy of the most efficient light sources currently in use.

Already today, many of the traditional lighting technologies can be easily replaced with LEDs in a wide variety of applications with resulting energy reductions. Incandescent, halogen, compact fluorescent, and mercury lamps are the easiest to replace. Even high pressure sodium and metal halide are capable of being replaced with resulting energy savings depending upon the wattage and application.

It is critical to understand the importance of luminaire design to LED performance. A well-designed luminaire must remove heat from the junction. The proper use of heat sinks and passive cooling technology is essential to obtaining optimum performance. Both LED lumen output and ultimately, the operating life are dependent upon luminaire design. There is no other lighting technology in use today where thermal effects are as critical.

COMPARISON OF SOURCE AND SYSTEM EFFICACIES (LPW) FOR LED AND TRADITIONAL LIGHTING TECHNOLOGIES



LED ADVANTAGE #2

Optical Control

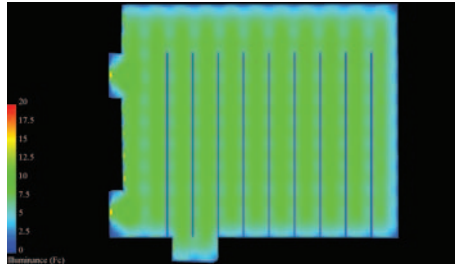
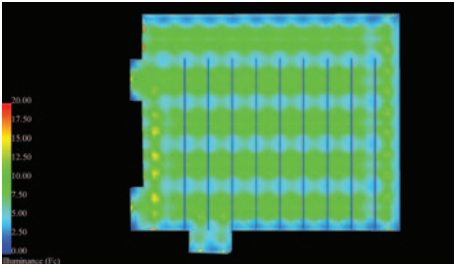
Most light sources, when utilized in luminaires, produce uncontrolled light – resulting in “hot spots” and other discontinuities in the illumination. The elimination of uncontrolled light results in incredible uniformity.

BetaLED luminaires are designed with patented NanoOptic® product technology, which controls the photometric distribution of the LED luminaire. NanoOptic product technology uses precision, injection molded acrylic plastic covers over the LED package. BetaLED luminaires closely match the light distribution achieved with traditional reflectors and with the other light sources in use today. The increased uniformity allows the lighting designer to specify lower average light levels in a layout while maintaining or improving the minimums.

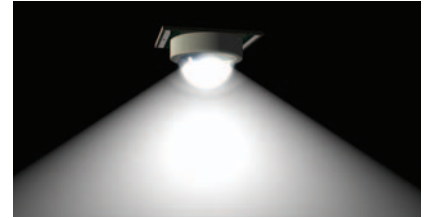
The result: Increased energy savings and a better quality of lighting design.

APPLICATION COMPARISON

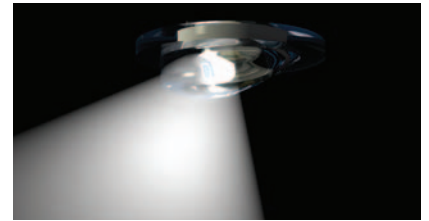
A computer rendering comparing the uniformity of lighting in a parking garage application using metal halide and LED lighting systems.



Without NanoOptic Product Technology



With NanoOptic Product Technology



A computer rendering of the NanoOptic™ altering the original packaged LED’s photometric distribution.

| 150W MH Solution | | LED Solution | | Notes |
|------------------|---------------------|--------------|----------------------|------------------------------------|
| AVG | 7.77 fc | AVG | 7.59 fc | Same Level of Illumination |
| MAX | 19.1 fc | MAX | 11.6 fc | 39% Lower MAX with LED |
| MIN | 1.9 fc | MIN | 2.3 fc | 21% Higher MIN with LED |
| MAX/MIN | 10:1 | MAX/MIN | 5:1 | Much Improved Uniformity |
| LLF | 0.75 (@ 6,000 Hrs.) | LLF | 0.95 (@ 50,000 Hrs.) | Superior Lumen Maintenance for LED |
| Power | 185 Watts | Power | 128 Watts | 31% Energy Savings for LED |

LED ADVANTAGE #3

Extremely Long Operating Life

WHAT IS THE EXPECTED OPERATING LIFE OF AN LED SYSTEM?

The Illuminating Engineering Society of North America (IESNA) is in the process of developing a document: *Approved Method for Measuring Lumen Depreciation of SSL Light Sources (LM-80)*. The definition of end-of-life for an LED luminaire is when the total luminous flux depreciates to a value of 70% of original.

Once this data is collected, LED luminaire manufacturers will then be able to publish curves such as the one shown on page 9. This graph shows the expected operating life of one particular BetaLED lighting system based upon its operation over a range of ambient temperature environments.

In a properly designed luminaire, the LEDs should operate for a minimum of 50,000 hours in a 25° C environment and longer if the ambient temperatures are less.

With proper attention to detail, LED operating life can be expected to range from 50,000 to more than 100,000 hours. Actual operating life of an LED will depend on three variables:

Junction Temperature – The temperature in the LED at the point where the light is generated (the junction). This temperature cannot be measured directly by the luminaire manufacturer, since the LED received by the manufacturer has already been encased within a sealed package. LED device manufacturers publish data that provides luminaire manufacturers with reference points on the LED package whose temperature correlates to the junction temperature.

Ambient Operating Temperature – The temperature environment in which the fixture will be operated. All life measurements reported by the LED device manufacturers are performed over a range of ambient temperatures. For a given luminaire, higher ambient temperatures will result in a shorter operating life; lower temperatures will allow the LED to operate even longer than anticipated.

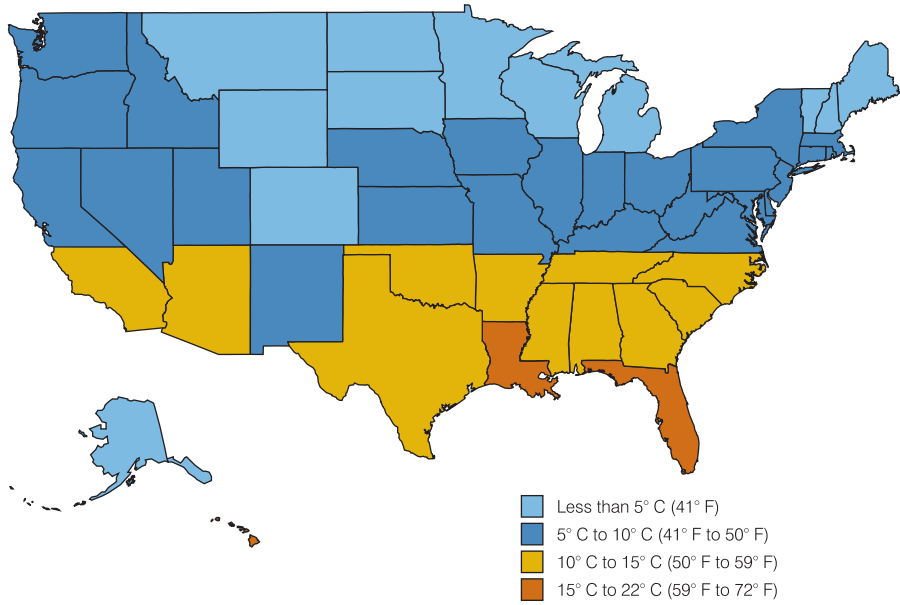
Luminaire Design – Luminaire design has a significant effect on LED operating life. In fact, two luminaires may show radically different operating lives in the same ambient, due to how well they are designed and how efficiently they remove heat from the LED. The adjacent chart shows the predicted operating life for the BetaLED area light luminaire in various ambient temperature conditions. Most luminaire manufacturers quote expected operating lifetimes based upon a 25° C ambient.

When predicting LED operating life, it is essential that both ambient operating temperature and luminaire design be evaluated, since both have an impact on the junction temperature. While fixture design is the primary determinant of junction temperature, the ambient temperature can have a significant impact on the life expectancy of the LED.

LED OPERATING LIFE IN OUTDOOR LIGHTING

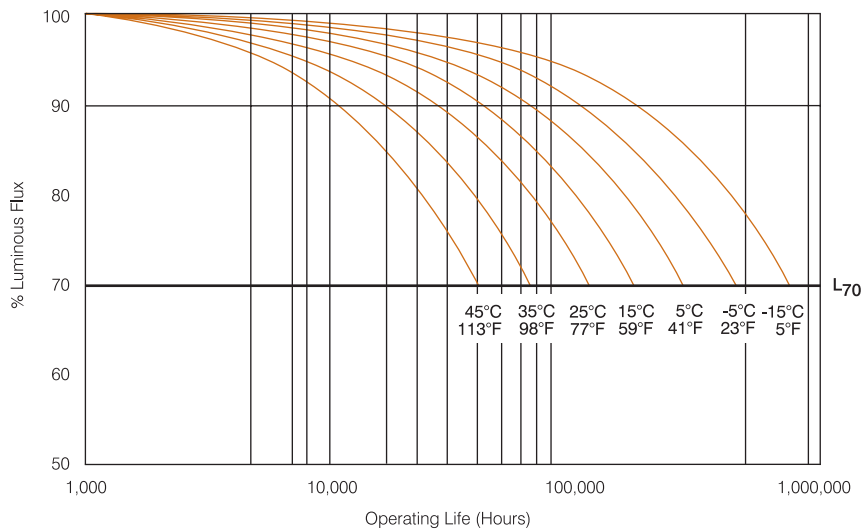
Across the United States, the average nighttime temperature is about 9° C. This temperature is 16° C lower than the ambient temperature at which LEDs lifetimes are estimated. It is reasonable to expect that a given luminaire used outdoors, exclusively at night, would have a realized lifetime much longer than that of the same luminaire used in an indoor lighting application, where the ambient is typically 25° C or higher. More information on interior lighting products and applications can be found at www.kramerled.com.

U.S. NIGHTTIME AVERAGE TEMPERATURES



BetaLED OPERATING LIFE

350mA Lumen Maintenance Predictions vs. Ambient Temperature

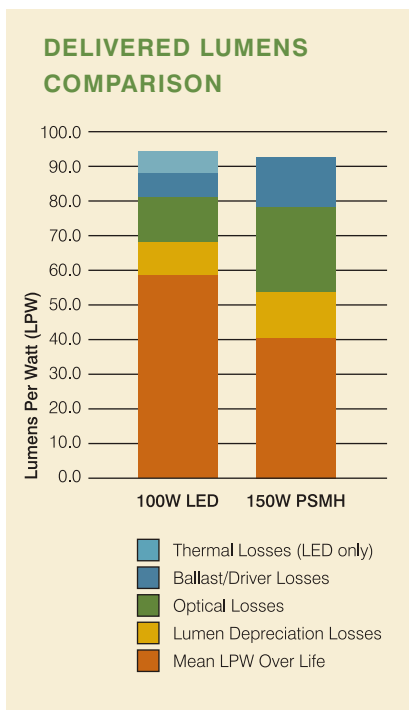


IMPORTANT: This data is specific to BetaLED luminaires only and cannot be used to estimate the life of LED products from other manufacturers. Each manufacturer should generate their own predictive operating life curves based upon the luminaire design and junction temperature of their LEDs.



LED ADVANTAGE #4

Delivered Lumens



All light sources experience lumen loss from one or more of the following:

Lumen Depreciation – Over their operating life, all light sources lose their capability to produce light. Lighting design calculations use average or mean lumens when determining a lighting layout.

Control Gear Losses – All discharge lamps (fluorescent and HID) utilize ballasts to regulate the current to the lamp. LEDs use drivers. All of these auxiliary devices use energy and decrease luminaire efficiency.

Optical Losses – Most luminaires use reflectors to control the direction of the light coming from the lamps. Optical losses can be very high, depending upon the design and the light source.

In addition, LEDs experience some lumen loss due to steady state operation in a luminaire – As discussed earlier, LED efficacy is measured with a very short burst of power. While this is fine as an industry standard practice, it is not indicative of how the LED will be used in general lighting applications. When the LED is inserted in a continuously operating luminaire, the LEDs will experience a junction temperature rise, resulting in a lower light output, thereby lowering the efficacy. LED fixture data must be corrected for this in order to allow them to be compared to other lighting technologies in an unbiased manner.

DELIVERED LUMENS

In order to evaluate a lighting system objectively, one must take into account all of the losses that the system will experience over its life as described above. Once these system losses are taken into account, the lumens per watt (efficacy) of the lighting system can be accurately calculated. The IESNA is also working on another document, *Guide for Electrical and Photometric Measurement of Solid State Lighting Products* (LM-79). Following the procedures outlined in this document will allow manufacturers to accurately publish photometric data for their LED luminaires. The end result will also be more consistent and credible reporting between manufacturers.

The chart at left shows a comparison between an LED system containing 100 one-watt (nominal) high-power LEDs and a 150 watt pulse start metal halide system. While both systems start at a similar efficacy, each one loses lumens due to the variables discussed above. The result is the LED system operates on average with 40% better luminous efficacy than the pulse start metal halide system. This system performance improvement allows the LED system to deliver equal mean lumens and save about 30% in energy over the 100,000 hours of LED system life. For a specific project, the actual level of savings depends upon the many variables associated with each lighting design.

Other LED Attributes and Advantages

ENVIRONMENTALLY FRIENDLY

As a light source, LEDs contain no mercury and no lead. Many of the LED luminaires being designed today are made from aluminum, which can be recycled. BetaLED luminaires are also RoHS compliant.

VARIETY OF COLOR TEMPERATURES

LEDs are available in correlated color temperatures (CCTs) ranging from 10000K to 2500K. This range of CCTs allows LEDs to be used in a wide range of applications. With the warmer color temperatures, the efficacy of the LEDs decreases. Consult manufacturer literature for the specific reductions. (Figure 1)

COLOR RENDITION

The color rendition in the blue-white LEDs used in BetaLED luminaires is 72 at the higher color temperatures (>5000K). Other color rendering options are available for white light systems depending upon the LED and method of light generation selected: phosphor conversion or RGB.

LOW MAINTENANCE AND DISPOSAL COSTS

The long operating life of LED products translates to lower maintenance labor costs, as well as a reduction in expenditures for fuels and maintenance vehicles. Disposal costs are also proportionately less than other lighting technologies. (Figure 2)

COMPATIBLE WITH PHOTOVOLTAICS

LEDs are low voltage devices and have low power consumption, making them very compatible in off-grid solar energy systems.

COMPATIBLE WITH LIGHTING CONTROL SYSTEMS

LEDs are highly compatible with lighting control systems, since they have no re-strike times, excellent color stability with dimming, and no negative impact on life from frequent starts.

LEDS CAN BE DIMMED

LEDs can be dimmed using either a two-level scheme or continuous dimming with 0-10 volt control input. Their efficacy (LPW) actually increases when they are dimmed due to lower junction temperatures.



Figure 1 – General Illumination Color

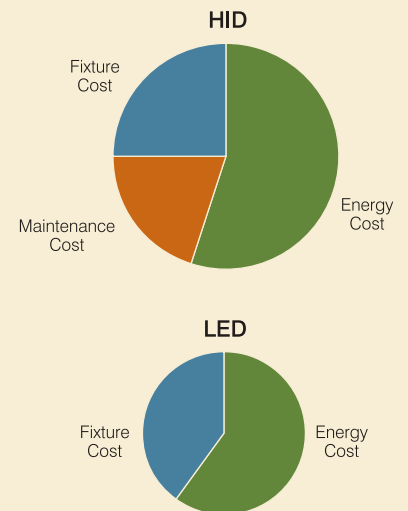


Figure 2 – Total Cost of Ownership



LED Lighting's Potential Impact on LEED Scoring and Certification

LED LIGHTING SYSTEMS ARE GREEN

- ← LEDs contain no mercury or lead
- ← LED luminaires often utilize die cast and extruded aluminum parts, totally recyclable materials.
- ← The increased efficiency of LED lighting systems results in less heat into the space, reducing the load on the air conditioning system. Impact? Even more energy savings.
- ← The improved uniformity of the distribution of the LED luminaires allows for reduced average lighting levels while maintaining the minimum light level requirements. This will further reduce lighting costs.
- ← Dimming, either continuous or stepped, can further reduce energy consumption.
- ← Each 1 million kWh in energy savings will reduce CO₂ emissions by an estimated 777 metric tons.

LED lighting can be a significant contributor to obtaining LEED certification for a new building or building remodel. The use of one technology or product cannot guarantee LEED certification as it is based upon a holistic approach to building design. LED lighting systems can contribute to LEED certification in four areas: Energy and Atmosphere, Sustainable Sites, Indoor Environmental Quality and Innovation.

ENERGY & ATMOSPHERE (EA)

The optimization of energy performance is worth 1 to 10 points in the LEED certification for new construction and renovation. This is the primary area where LED lighting can have an impact. Energy savings are a very important part of the criteria for certification in most LEED projects.

SUSTAINABLE SITES (SS)

Light pollution reduction has the potential for 1 point toward LEED certification. BetaLED outdoor luminaires are designed to be full cut-off and therefore can earn the light pollution credit.

INDOOR ENVIRONMENTAL QUALITY (EQ)

Control of the lighting system by individual occupants or specific groups in multi-occupant spaces can potentially earn 1 point toward LEED certification. LED luminaires provide the opportunity to work as part of a lighting control plan. They provide light instantaneously once power is applied, requiring no warm up time. LED lighting systems can also be dimmed to provide variable light output depending upon the needs of the occupants.

INNOVATION & DESIGN PROCESS (ID)

The utilization of innovative products and processes may earn between 1 and 4 points toward LEED certification. As LED lighting systems for general lighting represent new, innovative technology, they should qualify for LEED certification credit.

Questions to Ask When Specifying an LED Lighting System

LIFE PERFORMANCE

- ← What is the predicted life performance for the LED system per the IESNA LM-80 testing protocol?
- ← What is the life rating of the driver?
 - Are there any temperature limitations for the driver?
 - What are the performance specifications for the driver?
 - Efficiency, THD, Power Factor
 - Is the product adequately protected against electrical transients?
- ← What is the predicted impact of ambient operating temperature on life of LEDs?
On the driver?

PHOTOMETRIC PERFORMANCE

- ← What is the total initial lumen per watt rating of the luminaire?
(i.e. total system lumens per watt)
- ← Are photometric files (data per IESNA LM-79) available?
 - Was photometry performed by an independent laboratory?
- ← What is the range of light outputs available from the luminaire?

WARRANTY AND CERTIFICATIONS

- ← What is the luminaire warranty?
 - For the complete mechanical assembly?
 - For the electrical & LED components?
 - For the finish?
- ← Is the product certified for operation in the intended country of use? (UL, CUL, CE, etc)

COST

- ← What is the first cost for the system?
- ← What are the anticipated maintenance costs for the system over its life?

OTHER SYSTEM ATTRIBUTES TO CONSIDER

- ← Robust mechanical design – die cast aluminum or other materials?
- ← Is cooling of the LEDs passive or active?
- ← Is the product environmentally friendly?
 - Housing – recyclable?
- ← Are the luminaires repairable?



Are LEDs Ready for General Lighting?

We have discussed the many advantages of LEDs and the lighting systems in which they are utilized:

- 1 – High Source Efficacy
- 2 – Optical Control
- 3 – Extremely Long Operating Life
- 4 – Delivered Lumens

They are very capable of being used to make excellent general lighting sources that can replace many of the traditional lighting technologies in use today. In addition to these major advantages, LEDs also have a number of other favorable attributes as discussed earlier.

However, in order to benefit from all of these great characteristics, one must first develop a luminaire which takes into account the need for LEDs to be cooled. First and foremost, it will be properly designed lighting systems that will allow LEDs to reach their potential.

TODAY'S BENEFITS OF LEDS – IMPROVED LIGHTING PERFORMANCE WITH SIGNIFICANT SAVINGS!

The bottom line for LED lighting systems is that they have the potential to save a substantial amount of energy cost for lighting over the lifetime of a project. In addition to the energy savings, the long lives of LEDs in well-designed systems will result in substantial savings in both labor and material costs for maintenance.

LED LIGHTING AND LEED CERTIFICATION

There is a worldwide focus today on the “greening” of our planet. LED lighting systems do not represent the total answer for that, but they can play a significant role in reducing the estimated 20% of our electrical energy that is used for lighting.

We have seen that LED lighting systems can help in obtaining LEED certification in key areas:

- Energy & Atmosphere (EA)** – Energy reduction potential makes this the most significant category.
- Sustainable Sites (SS)** – Light pollution reduction.
- Indoor Environmental Quality (EQ)** – Individual lighting control.
- Innovation & Design Process (ID)** – A brand new technology for lighting.

LED lighting systems are a part of the solution!

A Bright Future for LED Lighting

LED lighting systems are available today for both interior and exterior general lighting applications. The range of product choices is expanding daily and is expected to increase dramatically over the next five years.

With the growth of this important new technology, LED systems will be applied in new and innovative ways:

SPECTRALLY ENHANCED LIGHTING

Research has been completed that promotes the concept of spectrally enhanced illumination. These studies have shown that people have better visual acuity in higher color temperature environments. LED lighting systems are available in color temperatures ranging from 3000K to 10000K. It is at those color temperatures above 4000K where the effect is most pronounced.

One benefit of this research could be in the reduction of light levels while maintaining excellent visual acuity. As this modification to the standards has not yet been adopted by the IESNA in the United States, we have not used any of these factors in our calculations.

MULTIPLE LEVEL LIGHTING

Many applications do not require full lighting levels all of the time. LEDs are fully capable of being dimmed, either continuously or with discreet levels. Warehouses, office buildings and parking structures are just some of the applications where multiple level lighting could be used to save substantial amounts of energy.

OFF-GRID LIGHTING SYSTEMS

There are many areas where electrical power is not readily available and the disruption to the environment and cost do not make it attractive to make it available. These areas are perfect candidates for solar powered off-grid lighting systems. LEDs are a perfect light source for these applications as they are low voltage, high efficacy devices.

These are just a few of the application areas where LEDs can and will have an impact as the years unfold. For additional information on LED systems please consult www.betaled.com, www.kramerled.com and the US Department of Energy website at www.netl.doe.gov/ssl.



GLOBAL HEADQUARTERS

UNITED STATES
1200 92nd Street
Sturtevant, WI 53177
T: 800-236-6800
F: 262-504-5415
www.betaled.com

CANADA

Ruud Lighting
6889 Rexwood Road, Unit 3
Mississauga, ON,
Canada L4V 1R2
T: 800-473-1234
F: 800-890-7505
www.ruud.ca

AUSTRALIA

Advanced Lighting Technologies, Inc.
110 Lewis Road
Wantirna South
Victoria 3152 Australia
T: 61 3 980 0 5600
F: 61 3 980 0 5533
E: sales@advancedlighting.com.au
www.advancedlighting.com.au

EUROPE

Ruud Lighting
Via dei Giunchi 52, 54
501 45 Florence, Italy
T: 39 055 343 081
F: 39 055 343 0200
www.ruudlighting.net

MIDDLE EAST

Ruud Lighting LLC
P.O. Box 74616, Dubai
United Arab Emirates
T: 971 4 398 0997
F: 971 4 398 2644
E: info@ruudlightingarabia.com
sales@ruudlightingarabia.com

NEW ZEALAND

Advanced Lighting Technologies, Inc.
P.O. Box 11, Tauranga
8 Boeing Place
Mount Maunganui, New Zealand
T: 64 7 579 0163
F: 64 7 579 0164
E: light@adlt.co.nz

ASIA-PACIFIC

Advanced Lighting Technologies
Asia Pte LTD
Block 4008, Ang Moo Kio Ave. 10
#04-06 Techplace 1
T: 65 6844 2338
F: 65 6844 2339
E: franslee@singnet.com.sg

BetaLED, a division of U.S.-based, privately-held Ruud Lighting Inc., was established to dedicate resources to the emerging use of LED technology for general illumination. BetaLED provides the lighting industry with high-quality, specification-grade luminaires for interior and exterior applications. Sold around the world through Ruud Lighting subsidiaries, affiliates and partners, BetaLED luminaires deliver efficiency, performance, longevity, and style in an environmentally-friendly solution.

Visit www.BetaLED.com for more information.



This brochure is printed on paper comprised of 100% post-consumer waste and is elemental chlorine free (ECF). It has been printed by a Forest Stewardship Council (FSC) certified supplier. FSC chain-of-custody certification tracks products from their origin through final use and contributes to responsible environmental practices.